

# YOUR CLIMATECONTROLLER



GOVET EUTECT Series



Koeltechniek

**govers**  **e.t. b.v.**

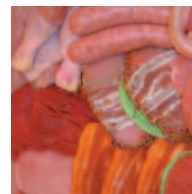
# YOUR CLIMATECONTROLLER

## GOVERS E.T. B.V.

has specialised in the development and manufacture of high quality chilling, freezing and heating units for transport and industry for over twenty-five years. The various development and production departments are continually improving the company's extensive series of products, with the top priorities being quality and environmentally friendly products. This is what makes the company a leader in high performance chilling, freezing and heating units with low noise emission and low fuel consumption. Its 24-hour service enables urgent problems to be identified and solved quickly and accurately by qualified technicians. Govers e.t. b.v. is a modern, customer-focused company with expert, committed staff.

### GOVET EUTECT Series

The GOVET EUTECT Series has custom-made eutectic tubes filled with a solid gel which can be mounted to the roof. A compressor unit is used to charge up the tubes. The tubes then keep goods at the right temperature during distribution by radiating cold. For freezing applications, natural cold radiation is used. For refrigerating applications, the cold air is blown into the cargo space by a thermostat-operated fan. These eutectic chill units are very suitable for multi drop vans. The eutectic tubes can also be mounted on the front wall for chilling applications. The tubes are then separated from the cargo space by an additional front partition, which also has a fan to blow cold air into the cargo space.



### DESCRIPTION Condensing units available in Q and T series

- FRAME**.....The frame is a self-supporting structure made of stainless steel, with a white protective coating and ABS grill.
- COMPRESSORS**.....Semi-hermetically sealed refrigerating compressors with a range of power ratings.
- RECHARGING**.....All units are designed for electrical (380 V) recharging.
- SWITCH BOX**.....The control unit in the box is fully automatic.
- OPERATION**.....Remote control in the cabin, fitted with an electronic thermostat with digital temperature readout, operation control lights and operating switches.
- REFRIGERANT**.....The units use the environmentally friendly refrigerant R 404A as standard.

### ADVANTAGES

- NON-TOXIC**.....The gel contains non toxic chromates.
- PROTECTION**.....The use of a solid gel rather than a liquid eliminates the possibility of product damage.
- WEIGHT**.....Low weight for its high capacity.
- NO CRYSTALLISATION**.....The solid gel does not crystallise, even after many years of operation.
- CORROSION-FREE**.....Tube special stainless steel evaporative spirals.
- STRONG PLASTIC**.....The body is made of polyethylene, which is resistant to acids, bases and UV radiation, and gives trouble-free operation down to -100°C. Material thickness 3.2 mm, compression-resistant to 3.5 bar.
- PATENT**.....The VVA tubes on the market have been further developed and patented.
- SERVICE**.....Low maintenance and service costs.

### TUBE LENGTHS

TYPE	WEIGHT	Technical information	
		HOLD OVER CAPACITY	
		-11°C	-33°C
GPE-4-1500	54 kg	3.000 Watt-hour	2.520 Watt-hour
GPE-4-1750	63 kg	3.500 Watt-hour	2.940 Watt-hour
GPE-4-2000	72 kg	4.000 Watt-hour	3.360 Watt-hour
GPE-4-2500	90 kg	5.000 Watt-hour	4.200 Watt-hour
GPE-4-3000	108 kg	6.000 Watt-hour	5.040 Watt-hour
GPE-4-3500	126 kg	7.000 Watt-hour	5.880 Watt-hour
GPE-4-4000	144 kg	8.000 Watt-hour	6.720 Watt-hour

Koeltechniek

**govers**  **e.t. b.v.**

Industriestraat 26 - 4861 PR Chaam  
 Postbus 41 - 4860 AA Chaam - The Netherlands  
 [T] +31 (0) 161 49 22 51 • [F] +31 (0) 161 49 24 54  
 [E] info@goverset.nl • [W] http://www.goverset.nl

 **- GOVET -**  Dealer: